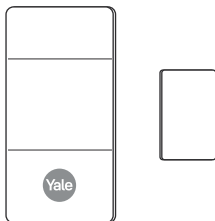


Mini Door/Window Contact Manual

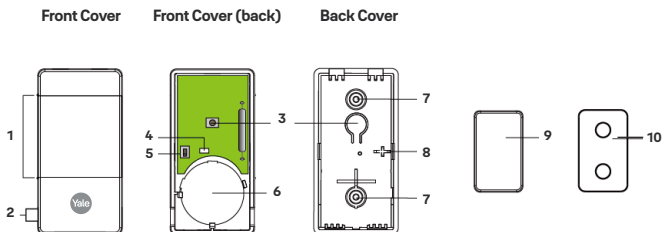
AC-MDC



The Mini Door/Window Contact monitors the opening/closing of specified doors and windows and is fixed to the monitored device frame with a magnet fixed to the device. When the door or window opens, the magnet moves away from the Mini Door/Window Contact, activating an internal magnetic switch causing it to transmit an alarm signal to the Sync Hub. The device also has the capabilities of communicating signal problems along with low battery occurrences.

The Mini Door/Window Contact design consists of a front cover and a back cover. The front cover contains all electronics and the back cover provides a means for fixing the device. An enclosed PCB tamper switch provides tamper protection against unauthorised device opening.

Identifying the Parts



1. Rib Marks
2. Battery Insulator
3. Learn / Test Button
 - Press the Test button to transmit a learn code.
 - Press the Test button once to enter Test Mode for 3 minutes.
4. Red LED Indicator
5. Tamper Switch
6. Battery
7. Mounting Holes (Knockouts)
8. Tamper Compression Mark
9. Magnet
10. Magnet Spacer

Accessories Included

- a) 1 x Magnet
- b) 1 x Double-Sided Adhesive Magnet Spacer
- c) 2 x Screws
- d) 4 x Wall Plugs
- e) 1 x Double-Sided Adhesive Tape (for Mini Door/Window Contact)

- f) 1 x Double-Sided Adhesive Tape Pad (for Magnet)
- g) 2 x Magnet Mounting Screws

Features

LED Indicator

In Normal Operation Mode, the LED indicator remains off except in the following situations:

- When Mini Door/Window Contact's Tamper switch is triggered.
- When the Mini Door/Window Contact is activated with either Tamper or Low battery condition.
- When the Mini Door/Window Contact is activated and transmitting the signal under the Test mode.

Supervision

- The Mini Door/Window Contact will automatically transmit Supervisory signals periodically to the Sync Hub at random intervals of 90 to 110 minutes in Normal Operation Mode.
- If the Sync Hub has not received the signal from the Door Contact for a preset period of time, the Sync Hub will indicate that particular Mini Door/Window Contact is experiencing an out-of-signal problem.

Tamper Switch

The tamper switch is designed to protect against unauthorised cover opening. When the tamper is triggered, Mini Door/Window Contact will emit a signal to the Sync Hub for reporting, the LED will also light up.

Battery

The Mini Door/Window Contact uses one 3V CR2450 Lithium battery as its power source. It is also capable of detecting low battery. When the battery is low, a low battery signal will be sent to the Sync Hub along with regular transmission. The LED will light up when the Mini Door/Window Contact is activated under low battery status.

Changing Battery

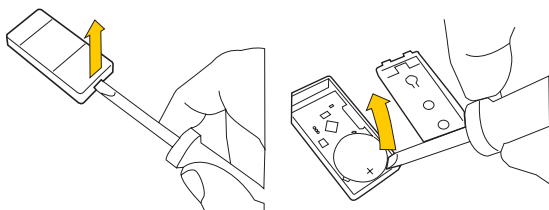
You need to open the cover to insert/remove the battery:

Step 1. Use a flat-headed screwdriver to fit into the cover opening hole on one side as.

Step 2. Push the flat-headed screwdriver upwards as.

Step 3. Turn to the other side and repeat Step 1 and Step 2.

Step 4. Once the cover is opened, you can proceed to change the battery. After the battery has been removed, press the Learn / Test button 5-6 times to fully discharge before inserting the new battery.



NOTE

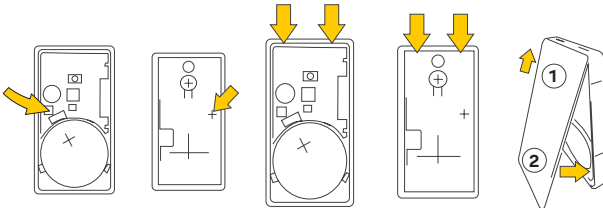
Make sure the battery mark with the positive side (+) is faced upwards when inserting the battery. Make sure to insert or place the battery from the top right angle as indicated in the picture.

Step 5. To replace the cover:

- Make sure the Tamper Compression Mark is aimed at the Tamper Switch.
- Also make sure the bottom hooks of the back cover is latched on the bottom of the front cover (back).
- Fit the bottom hooks into the bottom latches of the front cover (back) then push it downwards as in (picture above) then push forward the entire back cover to close it until you hear a clip sound.

Test Mode

- The Mini Door/Window Contact can be put into Test mode for 3 minutes by pressing the Test Button once.
- Under Test Mode, the LED will light up whenever the Mini Door/Window Contact is activated.
- Each additional Test Button press will reset Test Mode time to 3 minutes.



Getting Started

Step 1: Remove the battery insulator of the Mini Door/Window Contact.

Step 2: Put the Sync Hub into learning mode, refer to Sync Hub manual for detail.

Step 3: Press the Learn/Test Button on Mini Door/Window Contact to send signal to the Sync Hub.

Step 4: If the Sync hub successfully receives the signal, it will respond (e.g. emitting beeps). Refer to your Sync Hub manual to complete the learning process.

Step 5: After the Mini Door/Window Contact is learnt-in, put the Control Panel into "Walk Test" mode, hold the Mini Door/Window Contact at the desired location, and press the Test button to confirm if this location is within signal range of the Control Panel.

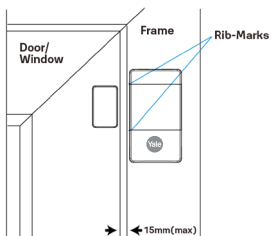
Step 6: When you are satisfied with the Mini Door/Window Contact at the chosen location, proceed to installation.

Installation

Mounting Methods

- Mount the Mini Door/Window Contact on the fixed frame of door/window using Velcro tape Mounting or Screw Mounting.
- Mount the magnet on the mobile object (door/window) using Screw Mounting or Adhesive Mounting.
- Align the magnet according to the rib mark on Mini Door/Window Contact. Where required, use the Magnet Spacer to better align the magnet to the rib marks.

NOTE: The magnet should be no more than 15mm from the detector when the door is closed.



Mounting Methods for the Mini Door/Window Contact Screw Mounting

The back cover has two Mounting Holes (knockouts), where the plastic is thinner for mounting purpose.

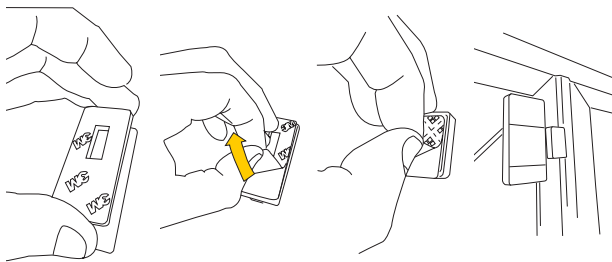
To Mount the Mini Door/Window Contact:

- I. Remove the cover.
- II. Break through the knockout on the back cover.
- III. Using the holes as a template, drill both holes.
- IV. Insert wall plugs if fixing into plaster or brick.
- V. Screw the back cover into the wall plug using a Philips screwdriver.
- VI. Attach the front cover to the back cover.

Tape Mounting:

The Mini Door/Window Contact can be wall mounted using tape provided.

- I. Clean the wall mounting location and back of the Mini Door/Window Contact with degreaser. Do not mount on wall with cracking paint or rough surface.
- II. Remove the backing on the 3M tape and attach to the back of the Mini Door/Window Contact.
- III. Remove protective cover on the 3M tape and press firmly to the door or window.



Mounting Methods for the Magnet

Screw Mounting

The back cover of the magnet has two Mounting Holes for mounting purpose.

To Mount the Magnet:

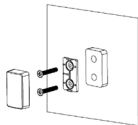
- I. Open the back cover by using a flat-headed screwdriver to fit into the caved in area and push upwards.
- II. Using the holes as a template, drill both holes.
- III. Screw the back cover into the door/window using a Philips screwdriver. Where required, use the Magnet Spacer to better align the magnet to the rib marks.
- IV. Attach the front cover to the back cover. You will hear a Click sound when the front cover is stabilised onto the back cover.

Adhesive Mounting

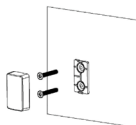
The Magnet can also be mounted using the double-sided adhesive tape pad or the double-sided adhesive Magnet Spacer.

- I. Clean the mounting location and back of the Magnet with a suitable degreaser.

Screw Mount with Spacer



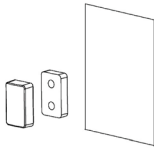
Screw Mount without Spacer



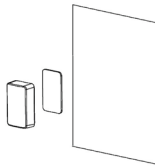
- II. Remove the protective covering from one side of the double-sided adhesive pad or the double-sided adhesive Magnet Spacer. Apply to the back of the Magnet and press firmly for 30 seconds to ensure good contact.
- III. Remove the other cover and firmly press the Magnet onto the desired location for 30 seconds.

NOTE: Please do not re-apply the double-sided adhesive tape pad or the double-sided adhesive Magnet Spacer. They cannot be re-used.

Adhesive Mount with Spacer



Adhesive Mount with Pad



www.yalehome.co.uk

Security & Risk Communications Limited, Parkway
Business Centre, Ballymount, Dublin, Ireland, 24

ASSA ABLOY Opening Solutions UK & Ireland
School Street, Willenhall
West Midlands, WV13 3PW UK

Version 1A

**Trusted
every day**

