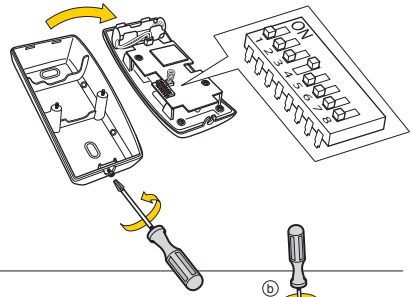
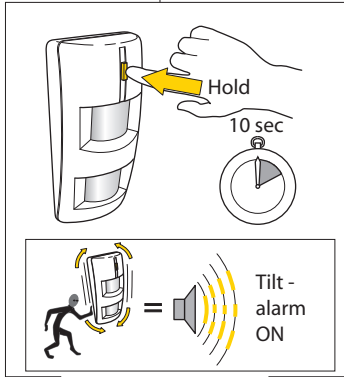
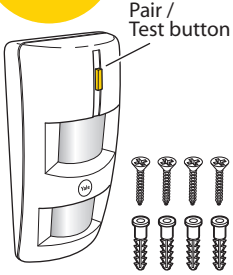


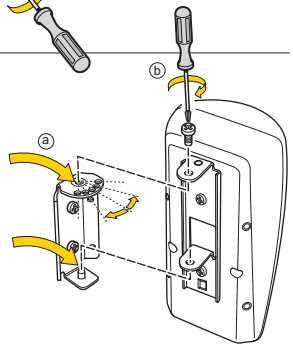
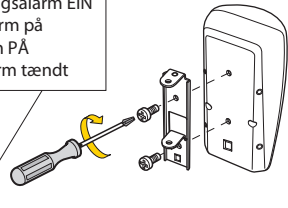
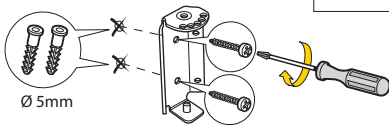
# Yale®

(GB) Installation - (IT) Installazione - (DE) Installation - (NO) Installasjon - (SE) Installation - (DK) Installation.



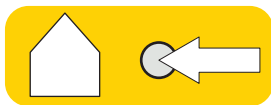
(IT) Associazione/test -  
(DE) Verbinden/Testen -  
(NO) Tilkobling/Test -  
(SE) Para/Testa - (DK) Tilslut/test  
SR-EIR

(DE) Neigungsalarm EIN  
(NO) Tilt alarm på  
(SE) Tilt larm PÅ  
(DK) Tilt alarm tændt

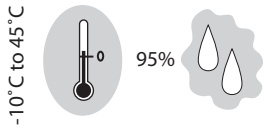


**(GB)** Please see your Yale Smartphone Alarm System Instruction manual for the following: Adding this component to your Alarm, Installing, Changing the batteries, Troubleshooting.  
**(IT)** Si prega di consultare il manuale istruzioni dell'allarme Yale Smartphone Alarm per le seguenti operazioni: Aggiungere questo componente al vostro allarme, Installazione, Sostituzione batterie, Risoluzione dei problemi.  
**(DE)** Bitte beachten Sie Ihren Yale Smartphone Alarm-System Bedienungsanleitung für folgende: Das Hinzufügen dieser Tür / Fenster-Detektor, um Ihren Alarm, Installieren, Batteriewechsel, Fehlersuche.  
**(NO)** Vi refererer til den medfølgende brukermanualen av Yale Smartphone Alarm systemet for følgende informasjon: Legge til tilleggsutstyr, Montere enheter, Bytte batterier, Problemløsning.  
**(SE)** För nedanstående hänvisas till Yale Smartphone Alarm system manualen: Lägga till en komponent till ditt larmsystem, Installation, Batteribyte, Felsökning.  
**(DK)** Se hovedmanualen til Yale Smartphone Alarm System, som indeholder vejledning i flg.: tilføj komponenter, installation, batteriskift, fejlfinding.

(GB) Environment - (IT) Ambiente - (DE) Umgebung - (NO) Miljø - (SE) Miljö - (DK) Miljø.



Housings ABS/polycarbonate



(IT) Involucro di TUTTI i dispositivi ABS/polycarbonato  
(DE) Alle Geräte, Gehäuse ABS Polycarbonat  
(NO) ALLE komponenter. Deksel av ABS/polykarbonat  
(SE) Alla komponenter, Plasthölje ABS/Polycarbonat  
(DK) Alle komponenter, ABS/polycarbonat



RoHS

An ASSA ABLOY Group brand

# ASSA ABLOY

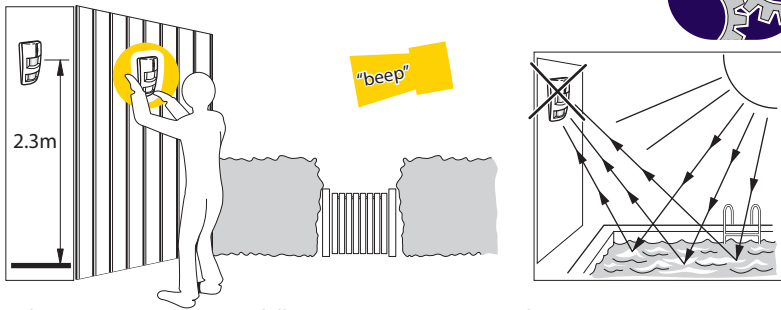
SR-EIR-RSA-v08



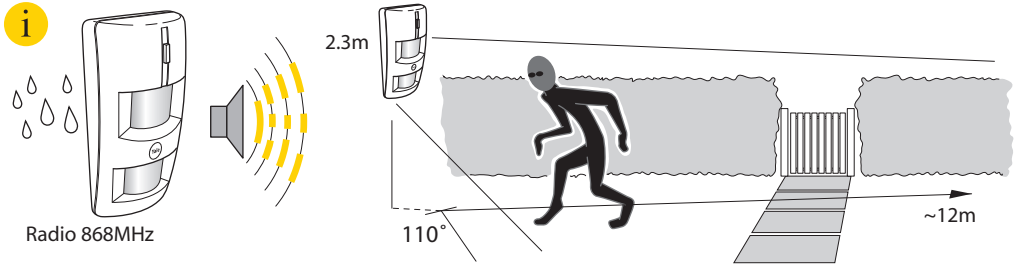
(GB) How does it work - (IT) Come funziona - (DE) Wie es funktioniert - (NO) Hvordan virker det - (SE) Hur fungerar det - (DK) Hvordan virker det



Pair and test planned location for stable radio performance (1)



(1 IT) Associazione nuovo dispositivo. Esegui un test della posizione programmata dei componenti - (DE) Verbinden neuer Geräte. Testen Sie Ihren gewählten Standort - (NO) Tilkobling av ekstrastyr. Test for stabile trådløse signaler - (SE) Para in nytt tillbehör. Test radiostyrka - (DK) Tilslut ekstrastyr. Test for stabil trådløs forbindelse



**i**

Switch 1	ON	Test mode
	OFF	<input checked="" type="checkbox"/>
Switch 2	OFF	<input checked="" type="checkbox"/>

Switch 3	ON	< 10 m
	OFF	~
Switch 4	ON	
	OFF	

Switch 5	OFF	OFF	ON	ON
Switch 6	OFF	OFF	ON	ON

Switch 7	ON	Reaction	High
	OFF	<input checked="" type="checkbox"/>	
Switch 8	OFF	<input checked="" type="checkbox"/>	Standard

30 cm	45 cm	60 cm	75 cm
20 kg	30 kg	40 kg	60 kg

1	ON
2	ON
3	ON
4	ON
5	ON
6	ON
7	ON
8	ON

Default

